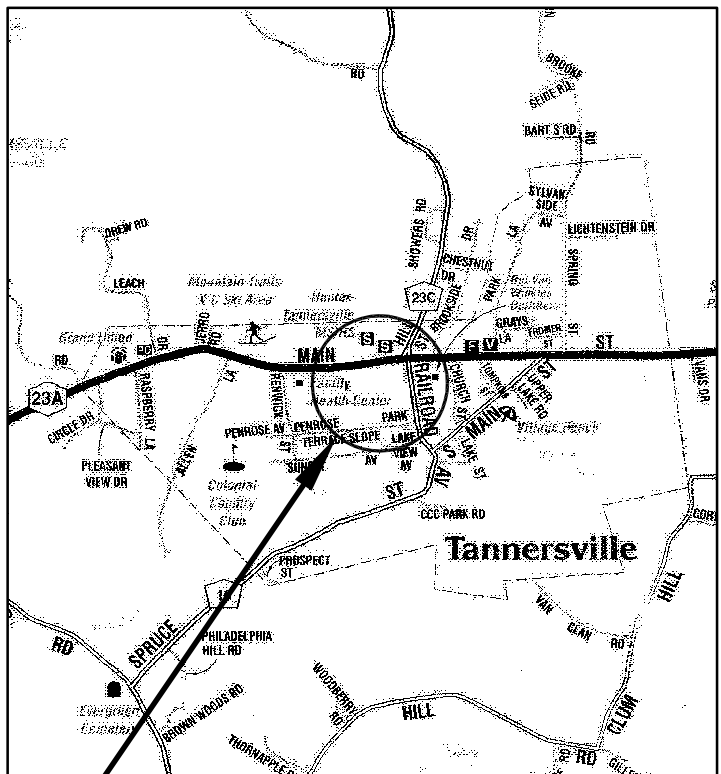
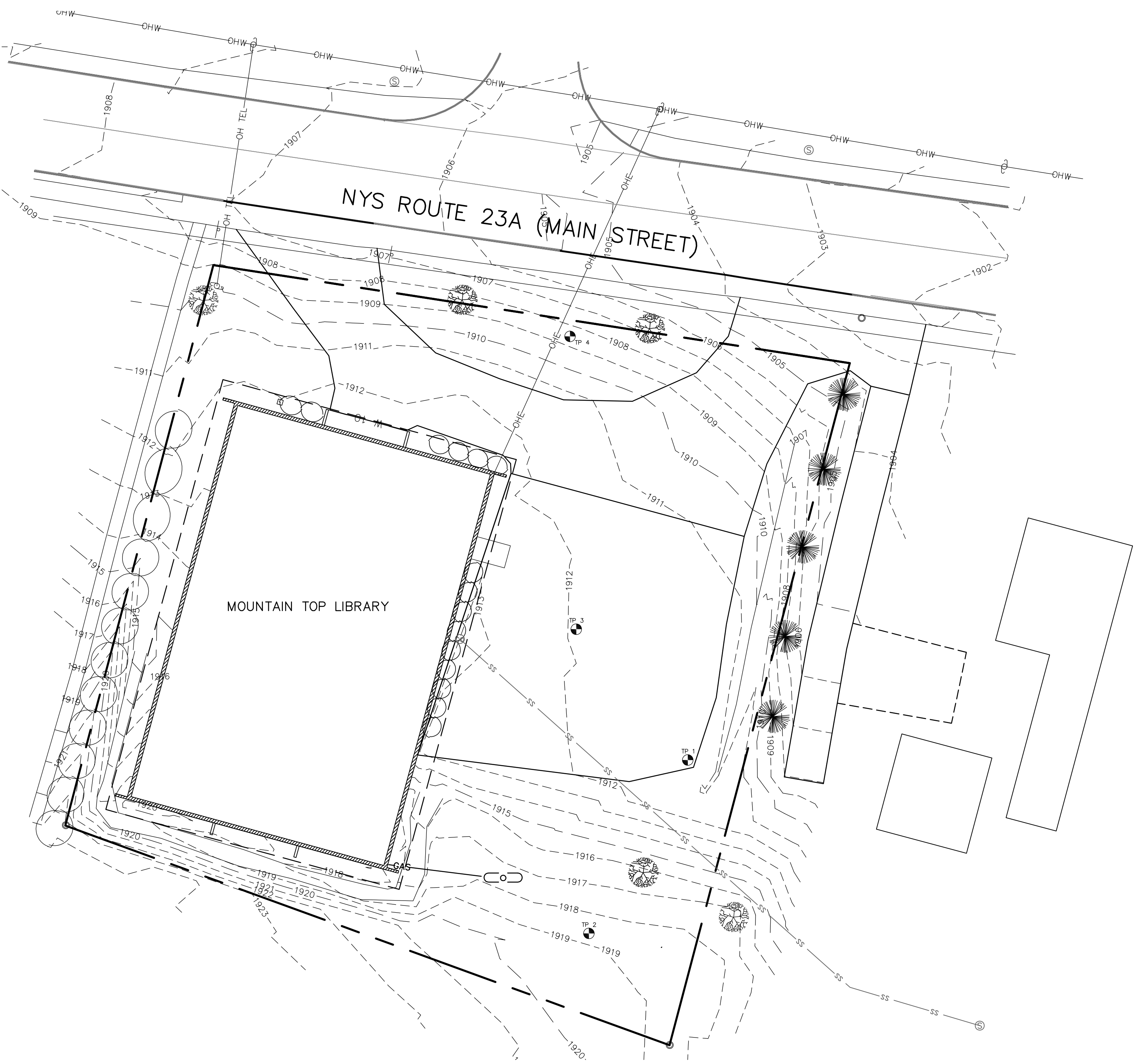
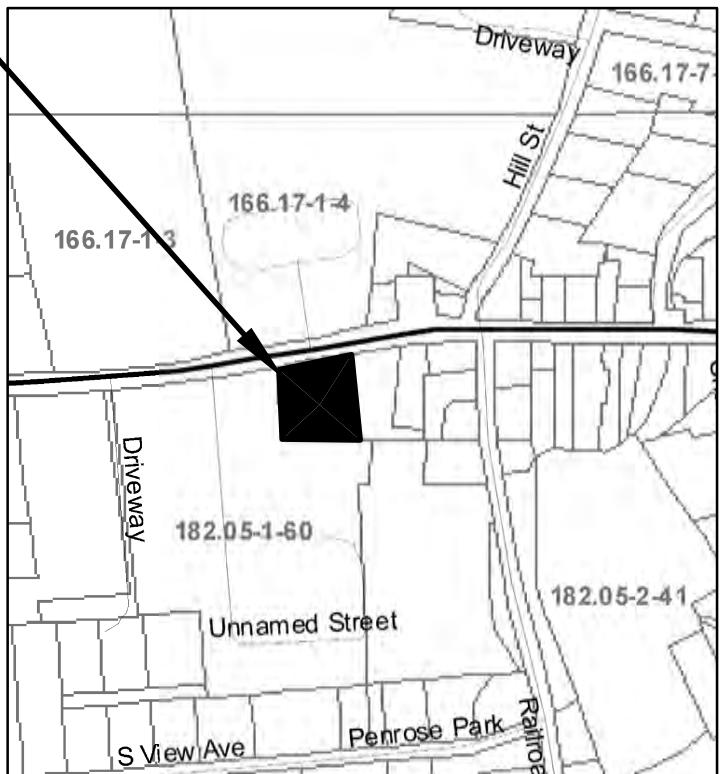


THE MOUNTAIN TOP LIBRARY



LOCATION MAP

SITE LOCATION



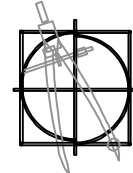
TAX MAP

TAX MAP ID: 182.05-05-1-6

LIST OF DRAWINGS

DRAWING	DESCRIPTION
SP-1	TITLE SHEET
SP-2	EXISTING CONDITIONS
SP-3	PROPOSED SITE PLAN
SP-4	DRAINAGE AREAS
SP-5	STORMWATER MANAGEMENT PLAN
SP-6	STORMWATER MANAGEMENT DETAILS #1
SP-7	STORMWATER MANAGEMENT DETAILS #2
SP-8	STORMWATER MANAGEMENT DETAILS #3
SP-9	MISCELLANEOUS DETAILS
SP-10	ENTRANCE DETAIL #1
SP-11	ENTRANCE DETAIL #2
SP-12	EROSION AND SEDIMENT CONTROL PLAN AND DETAILS

5	1/14/10	CONSTRUCTION SET REVISIONS	DCE
4	1/06/10	CONSTRUCTION SET REVISIONS	DCE
3	12/30/09	GENERAL REVISIONS	DCE
2	12/11/09	GENERAL REVISIONS	DCE
1	12/07/09	GENERAL REVISIONS	DCE
REV	DATE	DESCRIPTION	APP



KAATERSKILL ASSOCIATES

SURVEYORS, ARCHITECTS AND ENGINEERS
CAIRO, NY (518)622-9667



**GREENE COUNTY SOIL & WATER
CONSERVATION DISTRICT**

BOX 907 GREENE COUNTY OFFICE BUILDING, CAIRO, NY 12413
PHONE (518) 622-3620
FAX (518) 622-0344

THE MOUNTAIN TOP LIBRARY

NEW YORK STATE ROUTE 23A
VILLAGE OF TANNERSVILLE GREENE COUNTY, NY

TITLE SHEET

PROJECT: 183809
DATE: 11/15/09
SCALE: 1" = 20'
DRAWN BY: KAS/KFF
DESIGN BY: DCE

DRAWING:

SP-1

SHEET: 1 OF 12

NOTES:

- 1) SUBJECT TO THE RIGHTS OF THE PUBLIC IN AND TO NYS ROUTE 23A (MAIN STREET).
- 2) TOPOGRAPHIC SURVEY BASED UPON FIELD EVIDENCE OBTAINED ON OCTOBER 1, 2009
- 3) SUBJECT TO EASEMENTS AND RIGHTS OF WAYS AFFECTING SUBJECT PARCEL, IF ANY.
- 4) TOPOGRAPHY SHOWN REFLECTS A 1' CONTOUR INTERVAL.
- 5) TOPOGRAPHY DATUM IS BASED ON MAP REFERENCE #1.
- 6) THIS IS NOT A BOUNDARY SURVEY, BOUNDARY LINES ARE SHOWN APPROXIMATELY BASED ON MAP REFERENCE #1. THE HIGHWAY BOUNDARY IS SHOWN APPROXIMATELY BASED ON SCALING THE ROW TAKING MAPS
- 7) SIGHT DISTANCES MEASURED OCTOBER 1, 2009
- 8) UTILITIES WERE LOCATED AS FOUND IN FIELD AND AS LOCATED BY DIG SAFE AND REFERENCES BELOW , BEFORE ANY CONSTRUCTION, DIG SAFE IS TO BE CALLED TO CONFIRM ALL UTILITIES LOCATIONS. KAATERSKILL ASSOCIATES DOES NOT WARRANT ANY LOCATION OF UTILITIES AS SHOWN ON THIS MAP.
- 9) THE BUILDINGS SHOWN ON THIS PLAT ARE SHOWN FOR ILLUSTRATION ONLY INCLUDING ANY BUILDING OVERHANGS. BUILDING DIMENSIONS TO BE CONFIRMED BY ARCHITECT BEFORE ANY NEW BUILDING DESIGN AND BY CONTRACTOR BEFORE ANY CONSTRUCTION TAKES PLACE.

MAP REFERENCES:

- 1) MAP ENTITLED "SURVEY FOR THE MARION CENTER" PREPARED BY LARRY VANUCCHI L.S., DATED 12/24/2006
- 2) TURNPIKE LINE INFORMATION TAKEN FROM MAPPING PROVIDED BY N.Y.S.D.O.T.
- 3) WATER LINE INFORMATION TAKEN FROM MAPPING PROVIDED BY VILLAGE OF TANNERSVILLE.
- 4) SEWER LATERAL INFORMATION TAKEN FROM PARTIAL MAPPING PROVIDED BY N.Y.C.D.E.P.

SIGHT DISTANCE INFORMATION:

- 1) AT WEST DRIVE, SET INSTRUMENT AT 10±' SOUTH OF WHITE LINE AND AT 42±" SIGHT DISTANCE LEFT (WEST) 876±', SIGHT DISTANCE RIGHT (EAST) 395±'
- 2) AT EAST DRIVE, SET INSTRUMENT AT 10±' SOUTH OF WHITE LINE AND AT 42±" SIGHT DISTANCE LEFT (WEST) 985±', SIGHT DISTANCE RIGHT (EAST) 324±'

TEST PIT DATA

TEST PIT 1

0"-6" PARKING SURFACE MATERIAL
6"-32" FILL MATERIAL (CLAY MATERIAL AND BUILDING DEBRIS SUCH AS BRICKS)
32"-84" DENSE CLAY LOAM

TEST PIT 2

0"-4" TOPSOIL
4"-40" CLAY
40"-60" DENSE CLAY
WATER SEEPAGE AT 40"

TEST PIT 3

0"-3" PARKING SURFACE MATERIAL
3"-30" CLAY LOAM
30"-60" HARDPAN
NO WATER SEEPAGE

TEST PIT 4

0"-16" CLAY LOAM
16"-57" DENSE CLAY
57"-83" SAND

LEGEND:

- IRON ROD FOUND
- EXISTING SIGN
- EXISTING LOT PROPERTY LINE
- EXISTING STRUCTURE
- EXISTING SANITARY MANHOLE
- EXISTING UTILITY POLE
- EXISTING OVER HEAD WIRES
- EXISTING GRAVEL DRIVEWAY
- EXISTING EDGE OF PAVEMENT
- EXISTING 5' CONTOUR
- EXISTING 1' CONTOUR

5	1/14/10	CONSTRUCTION SET REVISIONS	DCE
4	1/06/10	CONSTRUCTION SET REVISIONS	DCE
3	12/30/09	GENERAL REVISIONS	DCE
2	12/11/09	GENERAL REVISIONS	DCE
1	12/07/09	GENERAL REVISIONS	DCE
REV	DATE	DESCRIPTION	APP

KAATERSKILL ASSOCIATES
SURVEYORS, ARCHITECTS AND ENGINEERS
CAIRO, NY (518)622-9667



**GREENE COUNTY SOIL & WATER
CONSERVATION DISTRICT**

BOX 907 GREENE COUNTY OFFICE BUILDING, CAIRO, NY 12413
PHONE (518) 622-3620
FAX (518) 622-0344

THE MOUNTAIN TOP LIBRARY

NEW YORK STATE ROUTE 23A
VILLAGE OF TANNERSVILLE GREENE COUNTY, NY

EXISTING CONDITIONS

PROJECT: 183809
DATE: 11/15/09
SCALE: 1" = 20'
DRAWN BY: KAS/KFF
DESIGN BY: DCE

DRAWING:

SP-2

SHEET: 2 OF 12

SEE LIGHTING AND LANDSCAPING PLAN BY OTHERS FOR
ADDITIONAL INFORMATION ON LIGHTING AND LANDSCAPING

21 PARKING SPACES ARE PROVIDED ON THE SITE PLAN

LIBRARY AND LEARNING CENTER USE IS RARELY EXPECTED TO BE CONCURRENT.

MAXIMUM LIBRARY OCCUPANCY BY CODE = 77 PERSONS (PER WALLANT ARCHITECTS)

EXPECTED MAXIMUM LIBRARY USAGE = 25 PERSONS (BASED ON DISCUSSIONS WITH LIBRARY REPRESENTATIVES)

PARKING FOR EXPECTED MAXIMUM LIBRARY USAGE (BASED ON 1.5 PERSONS PER CAR) = 17 SPACES

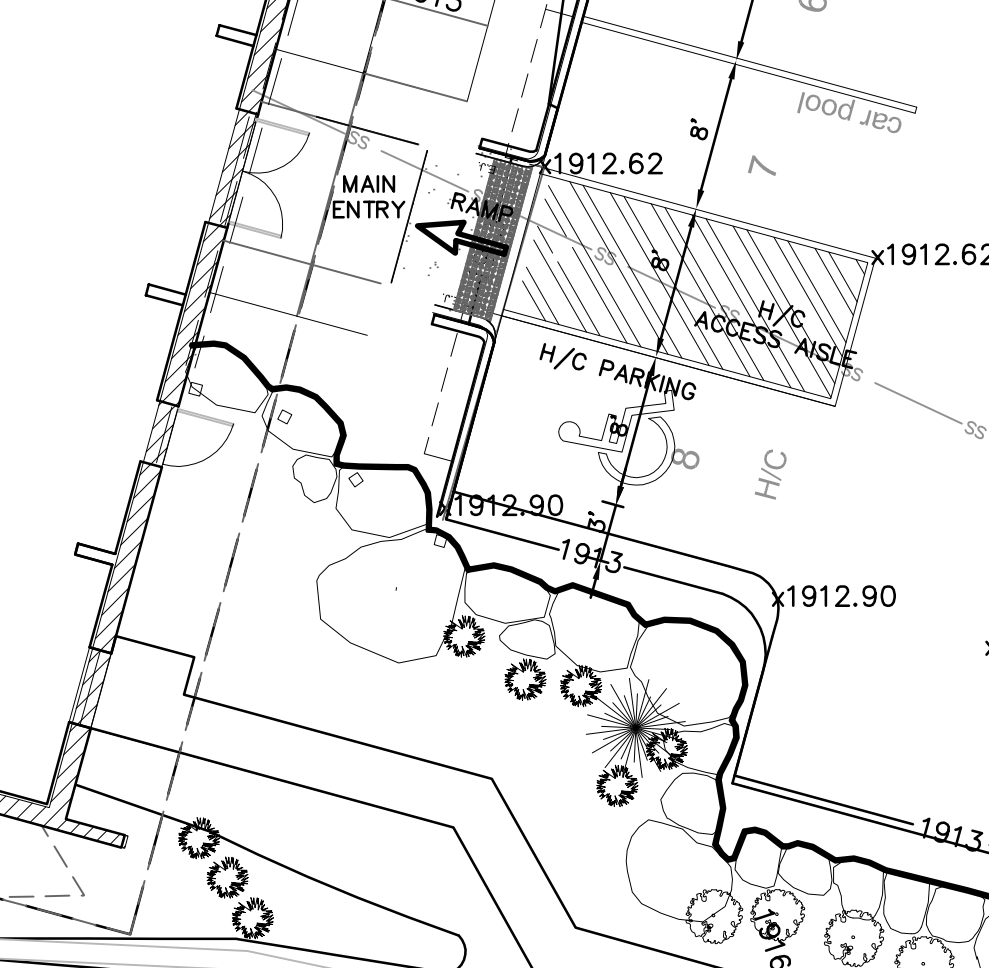
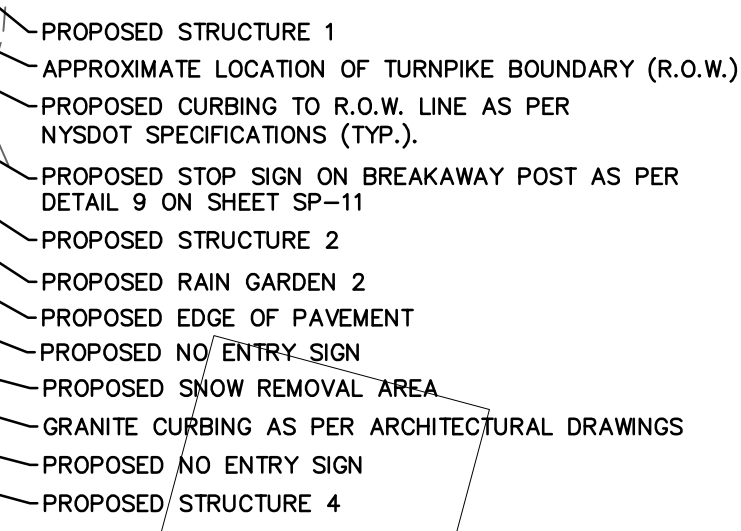
PROPOSED PARKING IS SUFFICIENT FOR NORMAL LIBRARY OPERATION.

MAXIMUM LEARNING CENTER OCCUPANCY BY CODE = 158

EXPECTED MAXIMUM LEARNING CENTER USAGE = 60

PARKING FOR EXPECTED MAXIMUM LEARNING CENTER USAGE
(BASED ON 1.5 PERSONS PER CAR) = 40 SPACES.

OFF-SITE PARKING WILL LIKELY BE NEEDED FOR LARGER EVENTS AT THE FACILITY.



SCALE: 1" = 20'

SCALE: 1" = 10'

5	1/14/10	CONSTRUCTION SET REVISIONS	DCE
4	1/06/10	CONSTRUCTION SET REVISIONS	DCE
3	12/30/09	GENERAL REVISIONS	DCE
2	12/11/09	GENERAL REVISIONS	DCE
1	12/07/09	GENERAL REVISIONS	DCE
REV	DATE	DESCRIPTION	APP

**CAIRO, NY (518)622-9667**

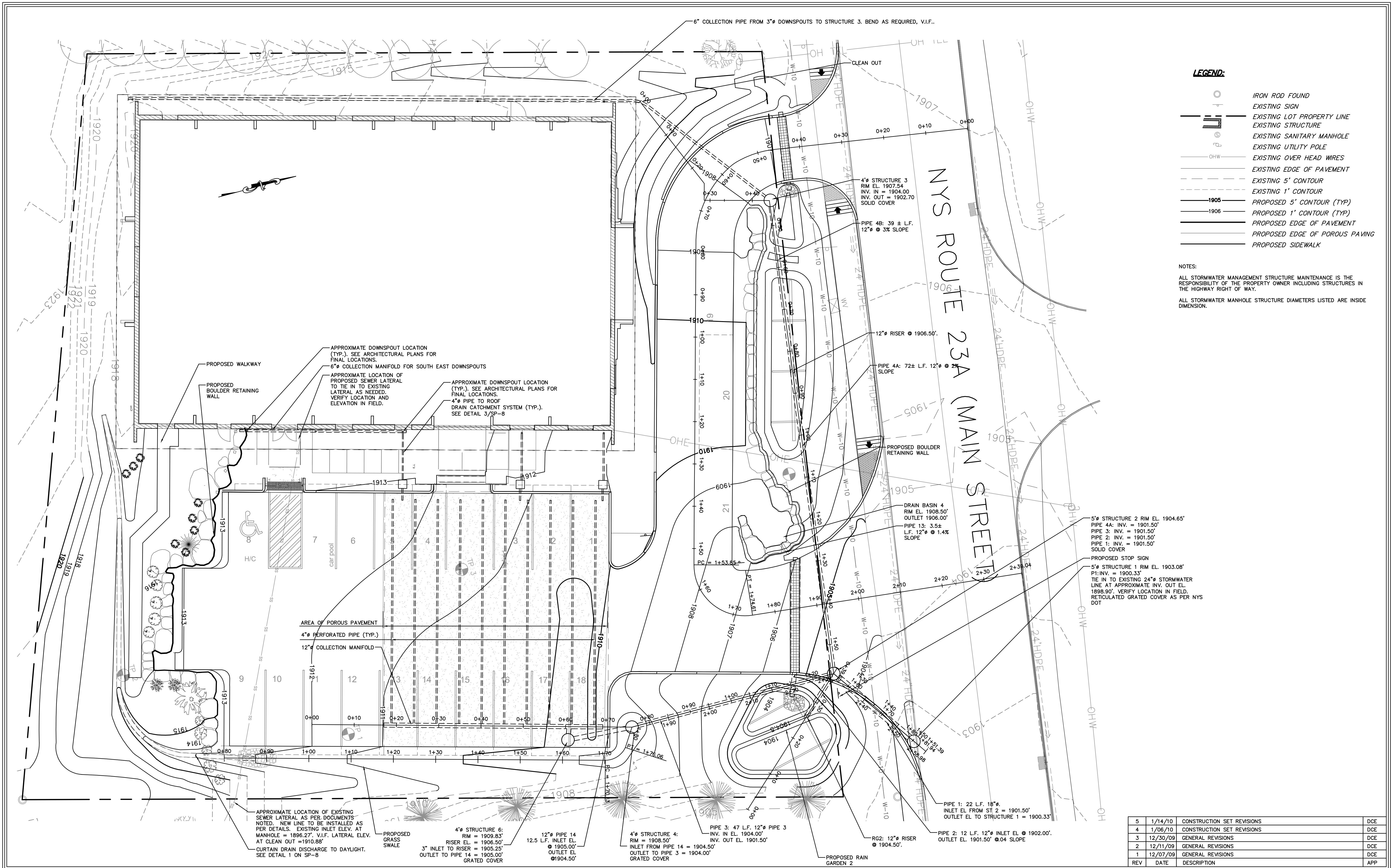
PHONE (518) 622-3620
FAX (518) 622-0344

NEW YORK STATE ROUTE 23A

VILLAGE OF TANNERSVILLE GREENE COUNTY, NY

DCE

SHEET: 3 OF 12



- LEGEND:**
- IRON ROD FOUND
 - EXISTING SIGN
 - EXISTING LOT PROPERTY LINE
 - EXISTING STRUCTURE
 - EXISTING SANITARY MANHOLE
 - EXISTING UTILITY POLE
 - EXISTING OVER HEAD WIRES
 - EXISTING EDGE OF PAVEMENT
 - EXISTING 5' CONTOUR
 - EXISTING 1' CONTOUR
 - PROPOSED 5' CONTOUR (TYP)
 - PROPOSED 1' CONTOUR (TYP)
 - PROPOSED EDGE OF PAVEMENT
 - PROPOSED EDGE OF POROUS PAVING
 - PROPOSED SIDEWALK

NOTES:


ALL STORMWATER MANAGEMENT STRUCTURE MAINTENANCE IS THE RESPONSIBILITY OF THE PROPERTY OWNER INCLUDING STRUCTURES IN THE HIGHWAY RIGHT OF WAY.

ALL STORMWATER MANHOLE STRUCTURE DIAMETERS LISTED ARE INSIDE DIMENSION.

5	1/14/10	CONSTRUCTION SET REVISIONS	DCE
4	1/06/10	CONSTRUCTION SET REVISIONS	DCE
3	12/30/09	GENERAL REVISIONS	DCE
2	12/11/09	GENERAL REVISIONS	DCE
1	12/07/09	GENERAL REVISIONS	DCE
REV	DATE	DESCRIPTION	APP



KAATERSKILL ASSOCIATES
SURVEYORS, ARCHITECTS AND ENGINEERS
CAIRO, NY (518)622-9667



**GREENE COUNTY SOIL & WATER
CONSERVATION DISTRICT**
BOX 907 GREENE COUNTY OFFICE BUILDING, CAIRO, NY 12413
PHONE (518) 622-3620
FAX (518) 622-0344

THE MOUNTAIN TOP LIBRARY
NEW YORK STATE ROUTE 23A
VILLAGE OF TANNERSVILLE GREENE COUNTY, NY
STORMWATER MANAGEMENT PLAN

PROJECT: 183809
DATE: 11/15/09
SCALE: 1"=10'
DRAWN BY: KAS/KFF
DESIGN BY: DCE

SP-5
SHEET: 5 OF 12