

GREENE COUNTY SOIL & WATER CONSERVATION DISTRICT WORKSHOP & TRAINING

Highway Ditch Stabilization Workshop

Monday, April 18, 2016

8:00am-12:00pm

AGENDA:

- 8:00am** Registration & morning refreshments
- 8:30am** "Erosion Prevention"
- 9:30am** "Filtrexx Land Improvement Systems"
- 10:30am** Break
- 11:00am** "Cellular Confinement & Load Support"
- 12:00pm** Closing Remarks

Learn about the Mountaintop Highway Ditch Stabilization Project, and how Mountaintop Highway Departments can receive funding.

LOCATION:

Greene County Emergency Services Building
25 Volunteer Drive
Cairo, NY 12413

REGISTER BY:
Monday, April 11th

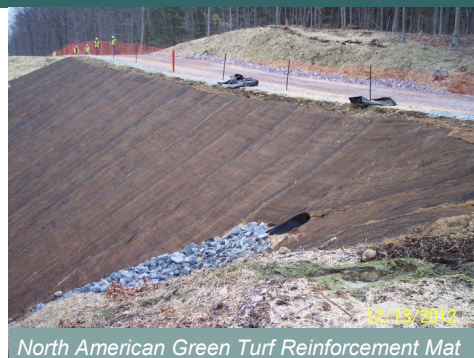
To register, or for more information, contact:
Samantha Root
Samantha@gcswcd.com
518-622-3620 x104

Join us for this free 3-hour highway ditch stabilization workshop to learn about innovative stabilization materials and practices that are currently available to treat roadside ditches.

"Erosion Prevention"

Joe Koziell—North American Green Regional Manager-Northeast

This course focuses on the use of vegetated solutions over hard armor techniques to control erosion. It begins with a discussion of the benefits of properly tracking a slope, seed selection, and soil tests, and then leads into different products available to assist in establishing vegetation.



North American Green Turf Reinforcement Mat

"Filtrexx Land Improvement Systems"

Jack Eaton—Filtrexx

This presentation discusses the benefits of using compost filter sock on your construction site in several applications including perimeter control, ditch checks, and inlet protection, and also covered are the advantages it brings when treating polluted runoff. Additional topics include the use of compost filter socks to stabilize slopes, and as green retaining walls.

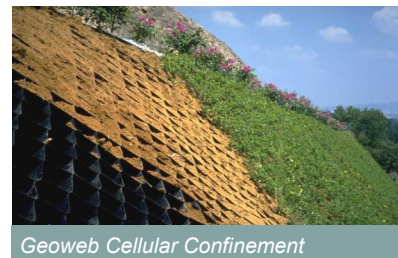


Filtrexx Compost Filter Sock

"Cellular Confinement & Load Support"

Doug McCluskey—EJ Prescott Assistant Erosion Control & Geoproduct Manager

The Cellular Confinement and Load Support presentation begins with a brief description of the initial development of Cellular Confinement and its original intended use. From there improvements on the original design and how they affect the products performance are discussed, and today's relevant applications are reviewed. Different installation procedures and techniques are covered next and various slides reveal projects, such as, slope stabilization, streambank protection, channel protection, vegetated retaining walls, and road/highway construction. Other products and applications are then discussed starting with a structural mat system, and then porous pavement options and products used to reinforce grassed areas.



Geoweb Cellular Confinement

Workshop Goals: To provide the attendees with a unique set of tools and applications to implement on construction sites. Also to provide education related to various vegetation establishment practices as it relates to jobsite conditions.

