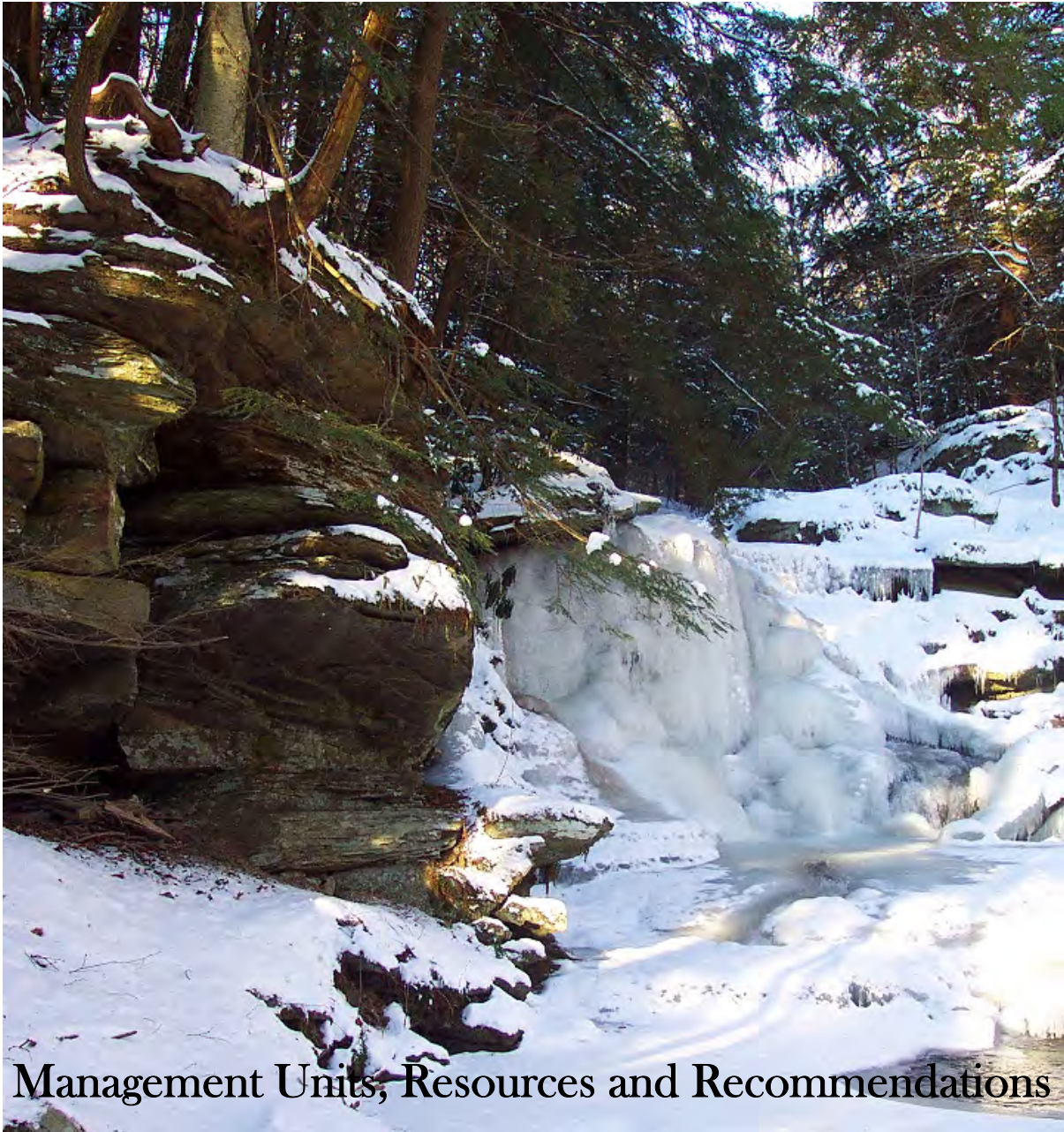


# The Chestnut Creek Stream Management Plan

## Volume II of II



Management Units, Resources and Recommendations

[Back to Web Index](#)

## **i. Foreword**

It is the distinct pleasure of the Sullivan County Soil and Water Conservation District to release Parts I and II of the Chestnut Creek Stream Management Plan. After three years of teamwork by many dedicated individuals, the initial objectives of this undertaking have been reached, and the Management Plan has come together.

Part I of the Management Plan will be a “reference manual” complete with graphs, tables, pictures, and facts about the stream. It will serve as a guide for broad-based in-depth studies of Chestnut Creek and its tributaries. Part II will be a condensed “field manual” that will serve as a quick guide for general information and will be able to be utilized in the field for application of on the ground work.

It is the hope and desire of the Soil and Water Conservation District that this Management Plan will continue to grow and be updated with time. A plan such as this is never complete; it must be amended and updated continually as needs, suggestions, concerns, zoning, etc. change within the community.

We sincerely hope that this plan will serve as a valuable reference tool for many years to come!

Brian Brustman  
District Manager  
Sullivan County Soil & Water Conservation District  
February 2004

Front cover photo of Crystal Falls, Neversink, New York courtesy of Archie Dean.  
Photo taken by Derrick Kelly, WAC.

## ii. Acknowledgements

The creation of the Chestnut Creek Management Plan has been enabled by the concentrated efforts of many people, working as a team, over the past three years. Firstly, we appreciate the efforts of Lori Kerrigan, Leslie Kirby, and Brian Brustman, Sullivan County Soil and Water Conservation District (SCSWCD) staff, who helped oversee much of the field effort and the project coordination, and drafted many sections of this management plan. We recognize the contribution of our current Technical Assistant and former AmeriCorps, Barbara Barone, as well as past AmeriCorps, Derrick Kelly and seasonal field crews, especially Christina Falk, for undertaking the tedious process of documentation and data collection.

We would also like to thank the NYC Department of Environmental Protection Stream Management Program (DEP SMP) staff for initiating this stewardship effort, and providing training and technical assistance and for their continued support, especially that of Sarah Miller, Beth Reichheld, Dan Davis, Phil Eskeli, and Beth Gelber . We wish to thank the Chestnut Creek Project Advisory Committee, a team of 35 who are identified in Section 2.0. We especially appreciate the participation of Russel Scheirer who has actively served as liaison to and representative of the landowners on the PAC, with co-representative Carol Smythe, Town Historian who volunteered time and information for the historical section of the plan.

We recognize local organizations such as the Beaver Dam Club, the Grahamsville Rod and Gun Club, Sullivan County Community College Geology Department, the NYS Department of Environmental Conservation (DEC) Fisheries and Habitat divisions, Cornell Cooperative Extension of Sullivan County (CCE) and DEP Division of Water Quality Control (Grahamsville), for their written contributions to the stream management plan.

We would like to acknowledge the Watershed Agricultural Council (WAC) for providing support for the Demonstration Restoration Project. We also recognize the cooperation of Town Supervisor Georgianna Lepke in helping make this effort a reality for the Chestnut Creek Watershed. We appreciate Gary VanValkenburg and the Town of Neversink Highway Department for lending equipment and operators for restoration projects along the Chestnut Creek. We want to thank Barbara Restaino, landscape architect, who also put in many volunteer hours to help design and implement the Demonstration Project. We are grateful for the advice and guidance of Natural Resources Conservation Service (NRCS) and CCE. We also thank Crystal Falls Farm for supplying so many of the materials needed for the project. We wish to acknowledge Integrated River Solutions (IRS) for the effort they have expended to better the restoration project.

A special thanks is extended to both IRS and Clear Creeks Consulting for providing recommendations and analysis for the stream management plan and management units. We recognize the contribution of the staff of the Sullivan County SWCD who showed great support for their colleagues throughout the development of the plan and the completion of the Grahamsville Town Hall demonstration project in Fall 2003. This stream management plan would not have been possible without its funders, and we thank the DEP SMP through the Water Resources Development Act of 1996 (WRDA), WAC, and the US Army Corps of Engineers under the Watershed Environmental Assistance Program.

### iii. Table of Contents

#### The Chestnut Creek Stream Management Plan

##### *Volume II - Field Manual*

<b>Section</b>	<b>Page</b>
i. Forward	1
ii. Acknowledgements	2
iii. Table of Contents	3
iv. List of Figures and Tables	5
I. Chestnut Creek Stream Management Unit Descriptions (MU 1-9)	8
<i>The following subsections are included in all Management Units</i>	
1. Summary Description	
2. Riparian Land Use and Public Infrastructure	
3. History of Stream and Floodplain Work	
4. Channel Stability and Sediment Supply	
5. Riparian Vegetation	
6. Restoration and Management Recommendations	
A. Management Unit 1	12
B. Management Unit 2	26
C. Management Unit 3	38
D. Management Unit 4	48
E. Management Unit 5	64
F. Management Unit 6	82
G. Management Unit 7	98
H. Management Unit 8	114
I. Management Unit 9	132
J. Management Units for Unsurveyed Tributaries to Chestnut Creek	144

## Chestnut Creek Stream Management Plan

II. Stream Stewardship Recommendations	145
A. Watershed Recommendations for Best Management Practices	146
1. Riparian Vegetation Management Recommendations	146
2. Infrastructure Recommendations	150
3. General Recommendations for Chestnut Creek Watershed	152
B. Management Unit (MU) Summary of Recommendations	156
III. Amending and Updating the Plan	161
IV. Stream Related Activities and Permit Requirements	163
V. Funding Sources and Agency Contacts	169
VI. Glossary of Terms	188
<i>Italicized words are defined within the Glossary at the end of each Volume.</i>	
VII. Appendices	198
A. Stream Assessment 2001 summary of Stream Type data.	
B. Draft Watershed Assessment Protocol, NYCDEP.	
C. PAC Project Site ranking questionnaire.	
D. PAC Project Site ranking results.	
E. Chestnut Creek Demonstration Restoration Project Site Report.	
1. Location map for Town Hall Demonstration Restoration Project Site, 2003.	
2. Cornell Soil Sample Nutrient Analysis Results, Town Hall planting site, Neversink, NY.	
3. Catskill species Planting List.	
4. Topographic survey of Project Site.	
F. Chestnut Creek Demonstration Restoration Project Site Planting Plan and Eroded Bank specifications.	
G. Riparian Buffer Monitoring Plan for the Town Hall Demonstration Restoration Site.	

## iv. List of Figures and Tables

### Figures by Section

#### I. Chestnut Creek Management Units 1-9

Figure 1. Chestnut Creek Management Units Location Map  
Metadata and Disclaimer

##### I. A. Management Unit 1

Figure 1. General Management Unit Map.

Figure 2. Stream Types and Cross Section Location Map.

##### I. B. Management Unit 2

Figure 1. General Management Unit Map.

Figure 2. Stream Types and Cross Section Location Map.

##### I. C. Management Unit 3

Figure 1. General Management Unit Map.

Figure 2. Stream Types and Cross Section Location Map.

##### I. D. Management Unit 4

Figure 1. General Management Unit Map.

Figure 2. Stream Types and Cross Section Location Map.

##### I. E. Management Unit 5

Figure 1. General Management Unit Map.

Figure 2. Stream Types and Cross Section Location Map.

##### I. F. Management Unit 6

Figure 1. General Management Unit Map.

Figure 2. Stream Types and Cross Section Location Map.

##### I. G. Management Unit 7

Figure 1. General Management Unit Map.

Figure 2. Stream Types and Cross Section Location Map.

##### I. H. Management Unit 8

Figure 1. General Management Unit Map.

##### I. I. Management Unit 9

Figure 1. General Management Unit Map.

**Tables by Section**

**I. Chestnut Creek Management Units 1-9**

- I. A. Management Unit 1  
Table 1. Summary of Morphological Data for Reaches along MU 1.
- I. B. Management Unit 2  
Table 1. Summary of Morphological Data for Reaches along MU 2.
- I. C. Management Unit 3  
Table 1. Summary of Morphological Data for Reaches along MU 3.
- I. D. Management Unit 4  
Table 1. Summary of Morphological Data for Reaches along MU 4.
- I. E. Management Unit 5

**II. Stream Stewardship Recommendations**

- II. B. Management Unit Summary of Recommendations  
Tables 1-5. Summary of All Recommendations Corresponding with MU.

**V. Funding Sources and Agency Contacts**

- Table 1. Government Sources and Contacts.
- Table 2. Private, Non-Profit Sources and Contacts.

# Chestnut Creek Stream Management Plan



## **I. Chestnut Creek Stream Management Unit Descriptions (MU 1-9)**

*The following subsections are included in all Management Units*

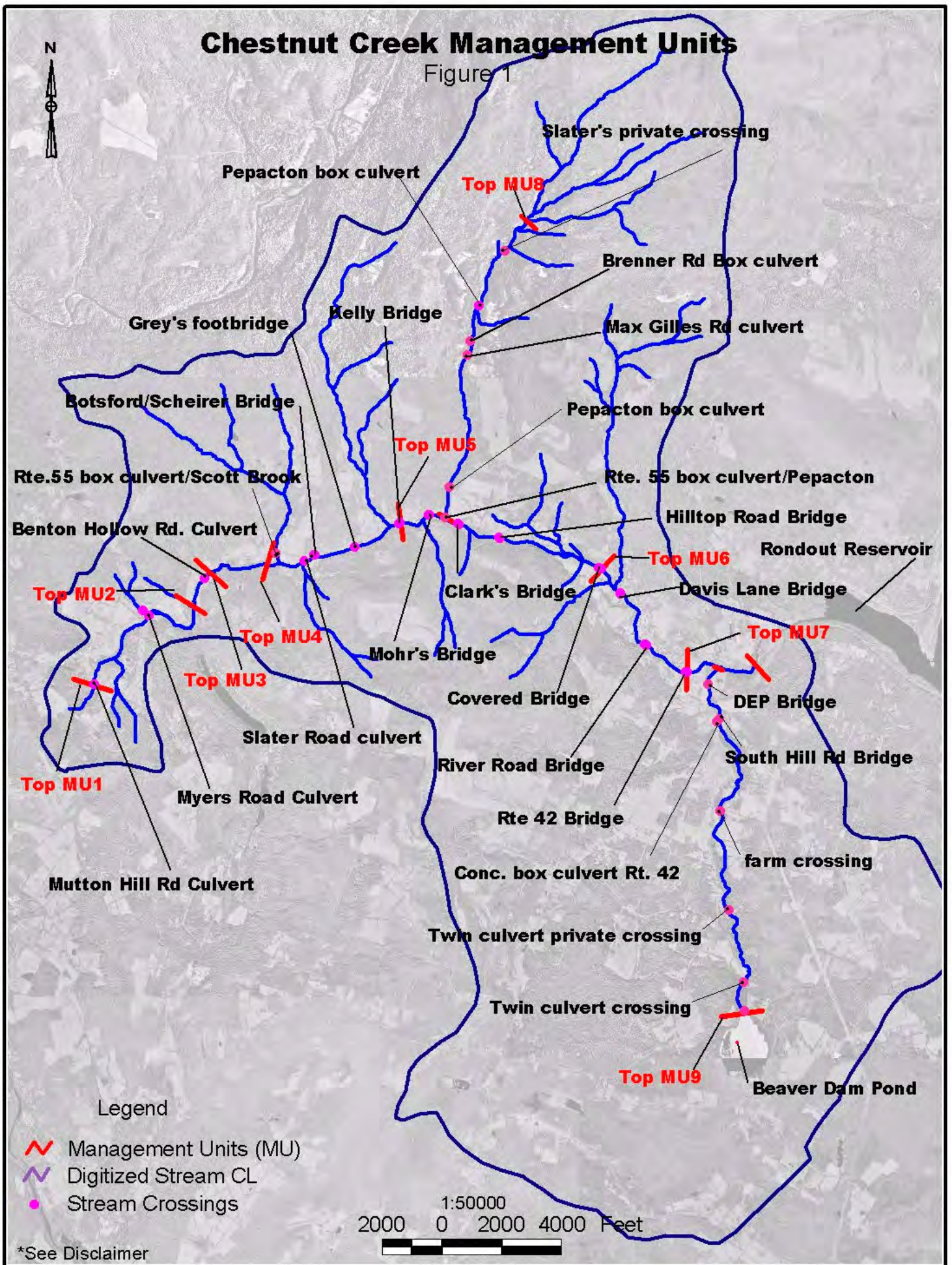
1. Summary Description
2. Riparian Land Use and Public Infrastructure
3. History of Stream and Floodplain Work
4. Channel Stability and Sediment Supply
5. Riparian Vegetation
6. Restoration and Management Recommendations

- A. Management Unit 1**
- B. Management Unit 2**
- C. Management Unit 3**
- D. Management Unit 4**
- E. Management Unit 5**
- F. Management Unit 6**
- G. Management Unit 7**
- H. Management Unit 8**
- I. Management Unit 9**



# Chestnut Creek Management Units

Figure 1



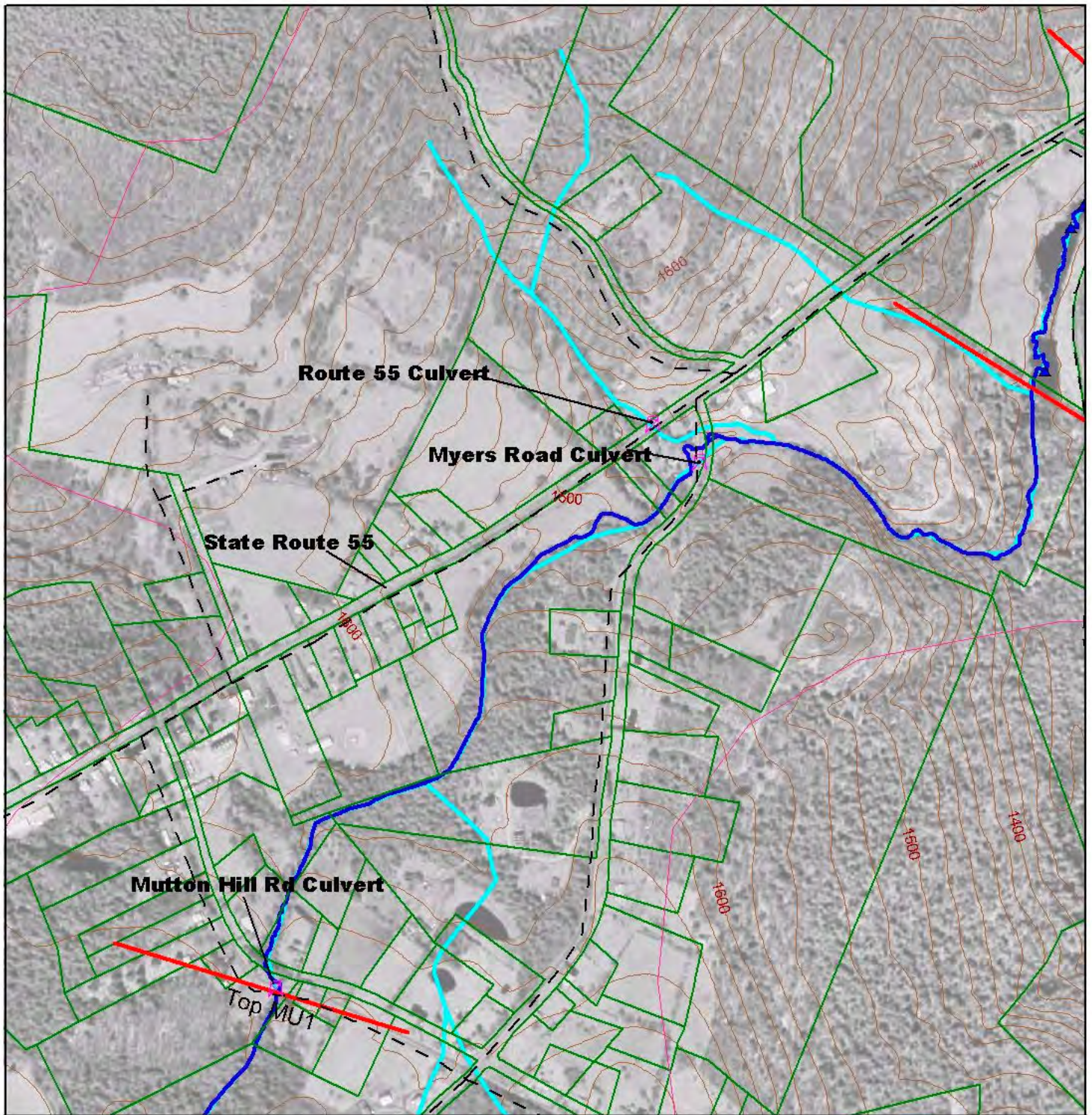
\*See Disclaimer

An aerial photograph of a landscape, likely a rural or semi-rural area. A prominent stream or creek flows through the center of the image, winding slightly. The surrounding land appears to be a mix of fields, possibly agricultural, and some wooded areas. The overall tone is somewhat muted, with a lot of grey and brownish-green hues. The text is overlaid on the top left portion of the image.

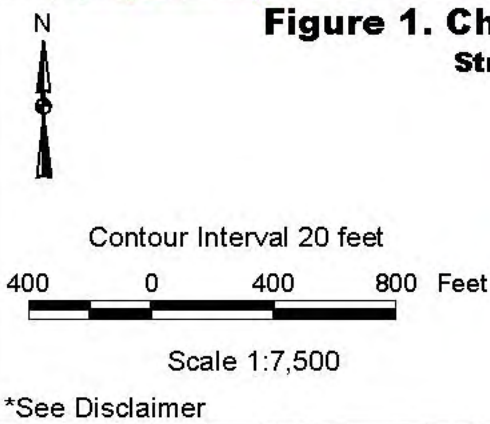
## **Chestnut Creek Management Unit and Stream Assessment Survey Metadata and Disclaimer**

**Aerial Photography, and GIS Parcel, Contour, Stream and Wetland coverages are edited and provided by NYC DEP, 2000, UTM NAD 27, Zone 18 North, meters. 2001 & 2002 Stream Assessment Survey coverages were developed by SCSWCD using GPS in the UTM, Zone 18 North projection, NADCON (Conus), datum. Cross section locations, stream type and MU boundaries have been digitized and are approximate. Many themes have been edited to reflect changes or improve accuracy.**

**Disclaimer Note: G.I.S. data are approximate according to their scale and resolution. Data may be subject to error and are not a substitute for on-site inspection or survey. Parcel coverages are based on Sullivan County Real Property tax maps 2000 and may not reflect actual surveyed property boundaries.**



**Figure 1. Chestnut Creek Management Unit 1  
Stream Assessment Survey 2001**



**Legend**

- |  |                           |
|--|---------------------------|
| Neversink Parcels                              | Digitized stream location |
| Management Unit Limits                         | Mainstem Chestnut-GPS CL  |
| Revetment                                      | Landfills                 |
| Road   | Tributary confluence      |
| Stream Crossing<br>(bridges show inlet/outlet) | Bedrock                   |
| Drainage culvert                               | Erosion                   |
|  | Debris Jams or Dams       |
|  | Knotweed                  |