

2.10 Recreational Opportunities

Primarily authored by the Schoharie County Soil and Water Conservation District

Schoharie County is a diverse landscape offering many opportunities for outdoor recreation. The natural and cultural heritage of this region is inextricably linked to the unique high quality streams that course through its mountains and valleys. These resources play a defining role in the character of its landscape. Recreation in and around these streams provide visitors and residents with many opportunities to reconnect with the natural world.

Schoharie County Forest Preserves

Schoharie County is home to several New York State Parks each offering its own unique setting and types of recreation. A few of these State Parks are within the Manor Kill Watershed (Figure 2.10.1). The New York State Department of Environmental Conservation (DEC) manages lands in the forest preserve according to its classification in the Catskill Park State Land Master Plan (NYSDEC, 1985). Management recommendations are based on specific land

characteristics and its capacity to withstand certain uses. These public uses include Wild Forest, Wilderness, Intensive Use, and Administrative Use. DEC's Catskill Forest Preserve Map and Guide graphically depict the locations of these different management areas and uses. This information can be obtained by visiting the DEC's Regional office for your area of interest. A listing of DEC offices as well as the areas they cover can be found at www.dec.ny.gov. There is also an interactive map on the site that illustrates locations of state parks throughout Schoharie and

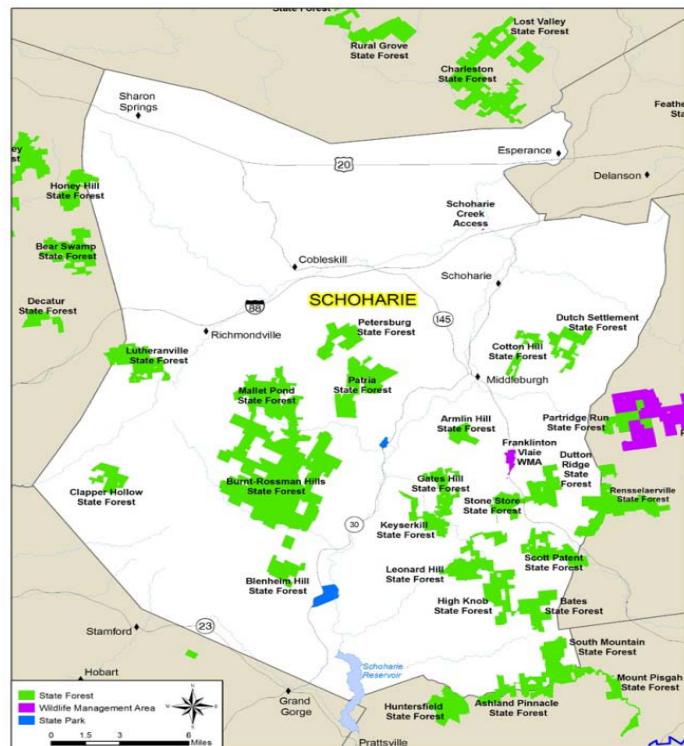


Figure 2.10.1 Schoharie County State Parks and Forest Preserves

surrounding counties (Figure 2.10.2). This map can be accessed directly through the following web address: http://www.dec.ny.gov/docs/lands_forests_pdf/cpslmpmap.pdf .

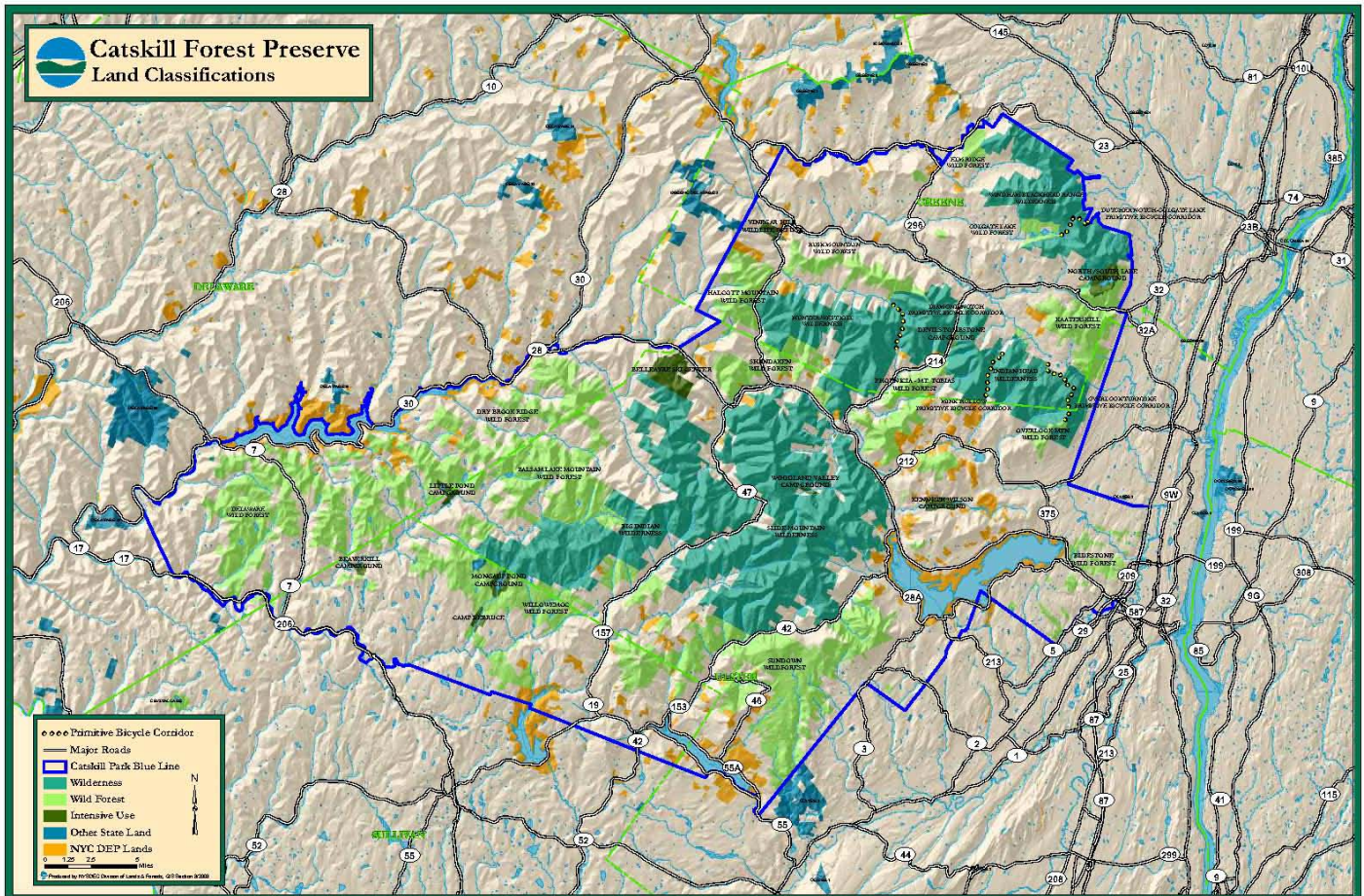


Figure 2.10.2 DEC Map Illustrating Forest Preserve Areas in the Catskill Forest Preserve Program

Some of these State forests may provide hunting, fishing, snowmobiling, skiing, camping, or hiking, opportunities. For more information about DEC recreation available at certain state parks, you can access their website at: <http://www.dec.ny.gov/index.html>.

NYCDEP Recreational Land

Areas in and around the Manor Kill watershed contain a diverse variety of habitats for wildlife. In addition to private forested land, there are several state forests nearby that can provide tremendous hunting, fishing, and hiking opportunities. Many of these areas are private property of the New York City Department of Environmental Protection (NYCDEP). However, special permits are issued for recreational activities within these protected areas. A list of types

of activities allowed as well as accessible locations can be found on DEP’s website at www.nyc.gov/dep (Table 2.10.1). Moreover, within the DEP website, detailed maps may be accessed which will give a more detailed description of the Wildlife Management Unit WMU (Figure 2.10.3).

Table 2.10.1 NYSDEP Wildlife Management Units within the Manor Kill Watershed Providing Recreational Activities with Special Permits

Map #	Area	Town	Location	WMU+	Hike	Fish	Hunt	Acres
37	Road 7 Unit	Gilboa	NYC Road7	4R	No	No	No	148
38	Bull Hill Unit	Conesville	Bull Hill Rd.	4G	Yes	Yes	Yes	90
39	Hubbard Hill Unit	Conesville	E. Conesville Road	4G	Yes	No	Yes	290
40	Hubbard Hill South Unit	Conesville	Hubbard & Bearkill Roads	4G	Yes	No	Yes	110
41	Bearkill Unit	Conesville	Bearkill Road	4G	Yes	No	Yes	115
42	Manorkill Unit	Conesville	Potter Mountain Road	4G	Yes	No	Yes	240
43	West Conesville Unit	Conesville	Bull Hill Road	4G	Yes	No	Yes	245
44	Macumber Road Unit	Conesville & Prattsville	Macumber Road	4R	Yes	No	Yes	142
45	Bluebird Road Unit	Conesville	South Mountain & Bluebird Roads	4R	Yes	No	Yes	222

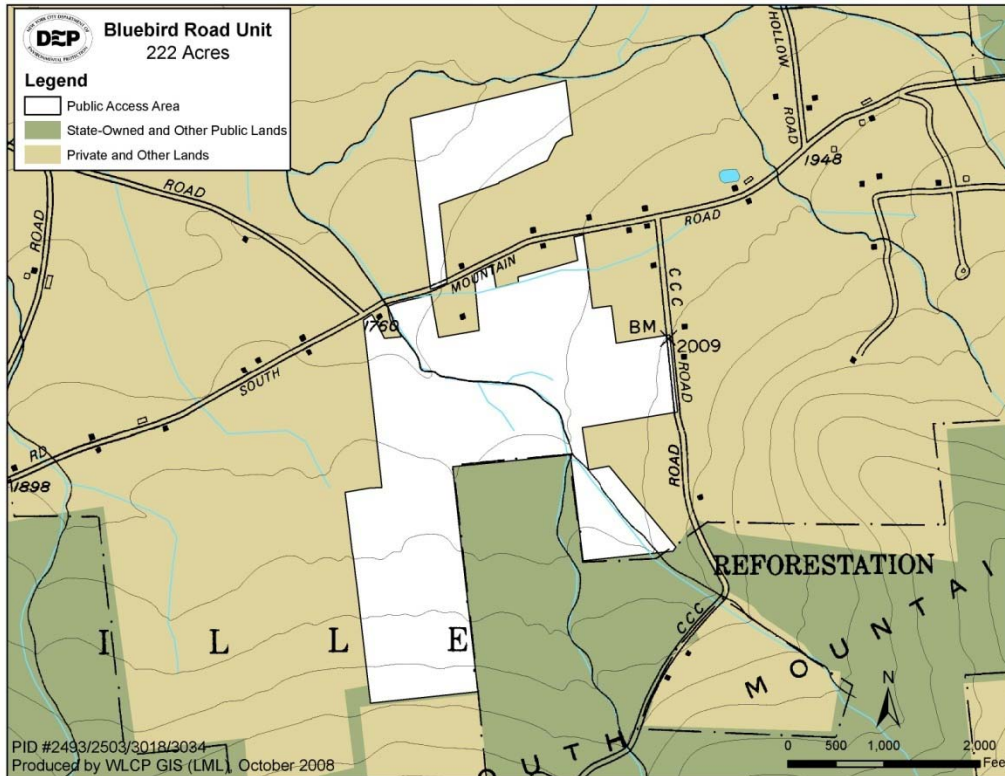


Figure 2.10.3 DEP Map Illustrating Wildlife Management

Hiking

The Long Path which runs almost parallel to the Manor Kill for a distance is a 347.35-mile (559 km) long distance hiking trail running from the George Washington Bridge in Fort Lee, New Jersey to Altamont, New York, in the Albany Area (Figure 2.10.4). It offers hikers an incredible diversity of environments to pass through, from suburbia and sea-level salt marshes along the Hudson to wilderness and boreal forest on Catskill summits 4,000 feet (1219 m) in elevation.

From Huntersfield the trail makes its way via a combination of roads, woodlots and field edges to Schoharie Reservoir and then enters the county of the same name. First stop is Mine Kill State Park and its waterfall, then the trail crosses through the woods to Lansing Manor at the Blenheim-Gilboa Power Project. It dips down into the Schoharie Creek valley and crosses to Eminance and Patria state forests on the other side, then up NY 30 to Vroman's Nose, a popular local hike.

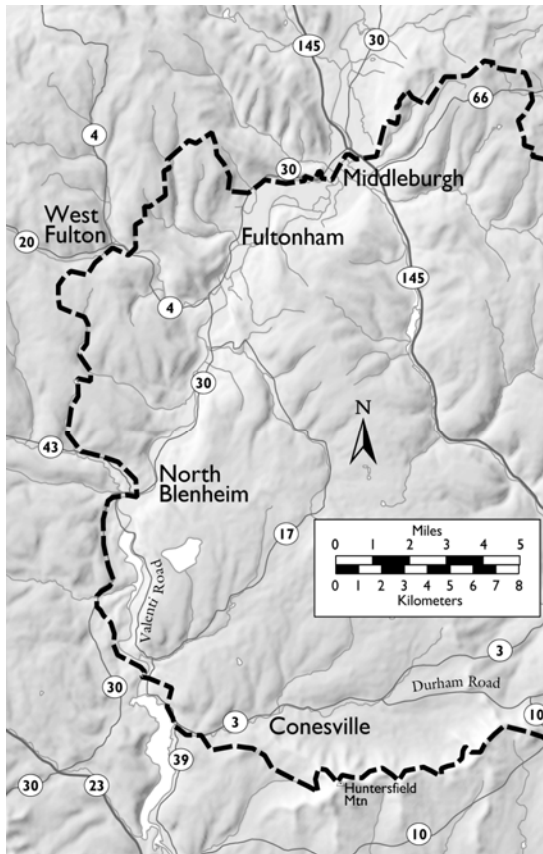


Figure 2.10.4 Map Illustrating Long Path Route through Conesville and North Blenheim, Schoharie Co.

The Long Path is currently under the purview of the Trail Conference, which divides it geographically into three sections:

- The Long Path South Committee for the areas south of the Catskills
- The existing Catskill Trails Committee for the Catskills
- The Long Path North Committee.

Throughout most of its length, whether on or off the road, the Long Path is

indicated by a 2-by-4-inch (5 by 10 cm) aqua blaze. In some areas where blazes have not been repainted in some time, older light blue blazes may be found; but the distinctive "parakeet" aqua (sometimes referred to, incorrectly, in some guidebooks



Parakeet Aqua Long Path Paint Blaze

as teal) indicates the Long Path, and only the Long Path.

Fishing

Although the DEC ceased stocking the Manor Kill in the mid to late 1990s, there remains a strong population of game fish. Native Brook Trout and Brown Trout populations have been captured by local anglers as well as during fish surveys conducted by the State University of New York at Cobleskill and the NYSDEC. This is indicative of good trout habitat being found throughout scattered portions of the Manor Kill watershed including the Bear Kill. Currently there is no public access fishing easements on the Manor Kill except by special permit on DEP properties (see above). Trout fishing season in New York is open from April 1st through October 15th. To view more information on the fishing season for these and other species of fish in New York State, see the Freshwater Fishing Guide at: <http://www.dec.ny.gov/outdoor/fishing.html>.

References

NYSDEC. 1985 Catskill Park State Land Master Plan. New York State Department of Environmental Conservation (DEC), Albany, NY.