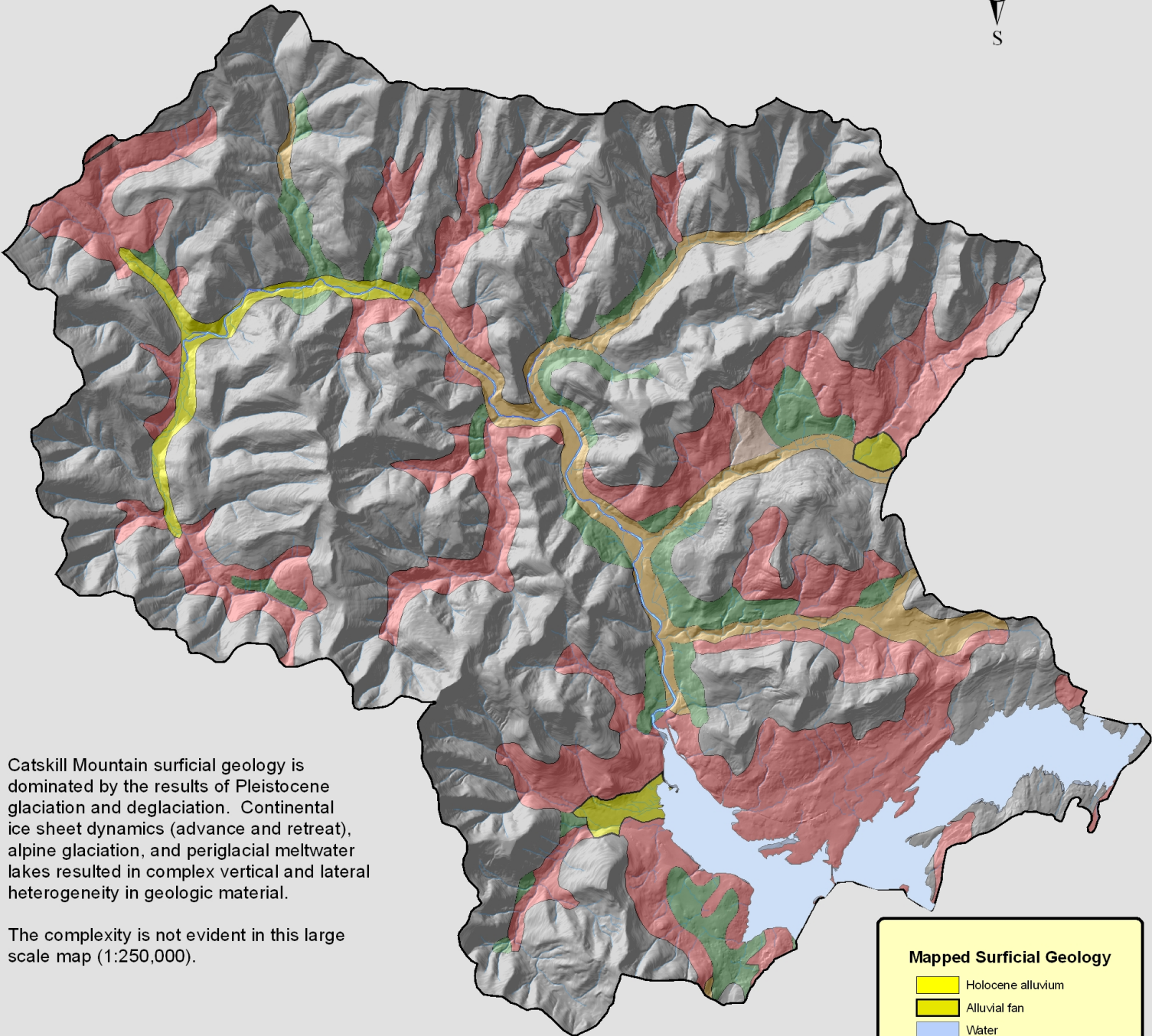
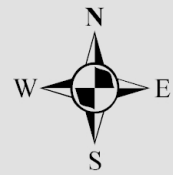


# Ashokan Basin Surficial Geology



Catskill Mountain surficial geology is dominated by the results of Pleistocene glaciation and deglaciation. Continental ice sheet dynamics (advance and retreat), alpine glaciation, and periglacial meltwater lakes resulted in complex vertical and lateral heterogeneity in geologic material.

The complexity is not evident in this large scale map (1:250,000).

0 1.5 3 6 Miles

## Mapped Surficial Geology

- Holocene alluvium
- Alluvial fan
- Water
- Kame deposits
- Kame moraine
- Lacustrine sand
- Lacustrine silt and clay
- Outwash sand and gravel
- Peat muck
- Rock
- Glacial till
- Till moraine

Data Source:  
NYGS 1: 250,000 Surficial Geology Map of New York State.  
10 Meter elevation grid; NYSDEC, 1998