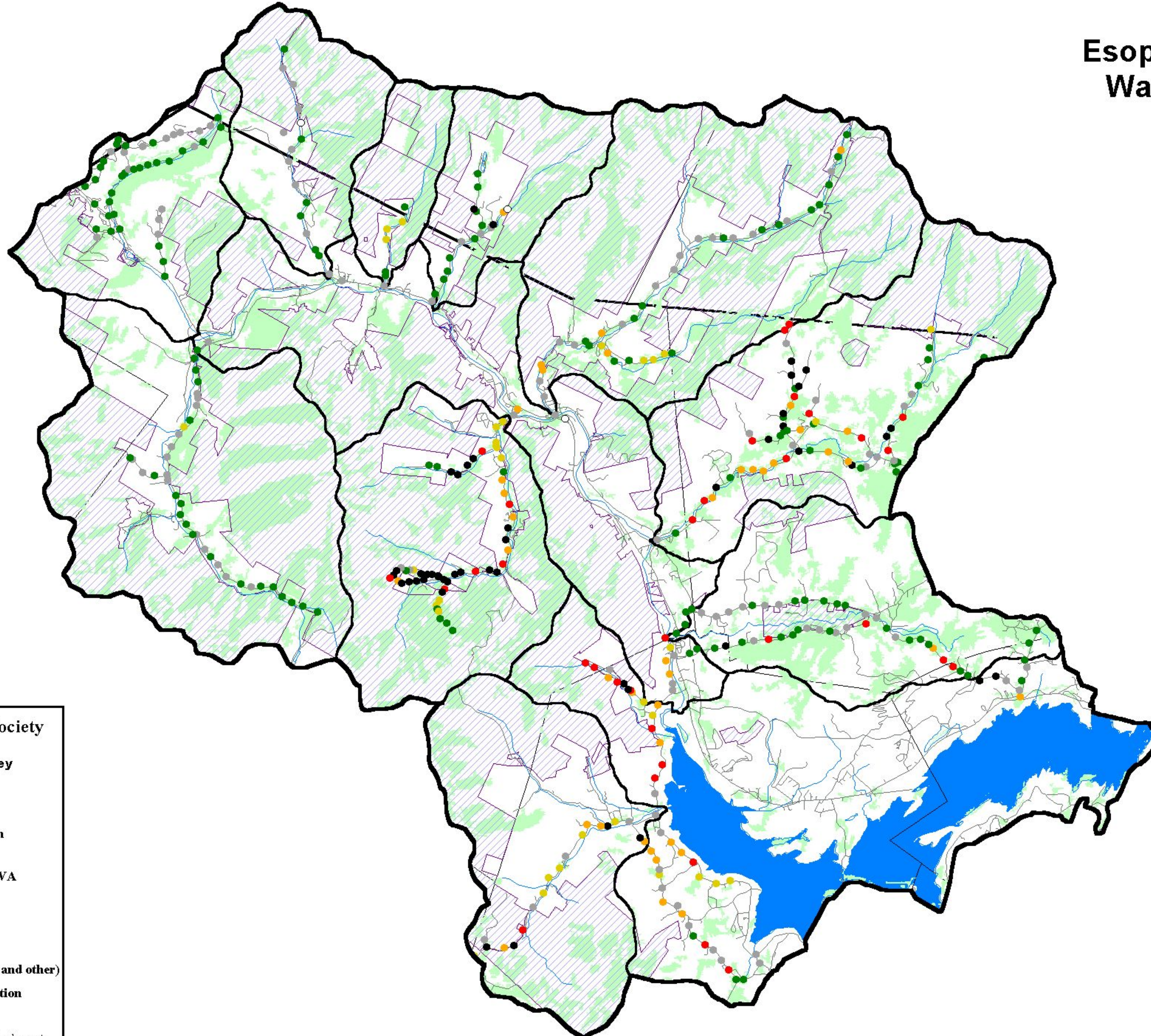





Esopus Creek Watershed




 Olive Natural Heritage Society
Catskills
Hemlock Woolly Adelgid Survey
2002 Data

- Healthy hemlock, no HWA observed
- Healthy hemlock, early HWA infestation
- Tree health declining, moderate HWA
- Tree health advanced decline, severe HWA
- Dead and dying hemlock
- Hemlock present but not accessible
- No hemlocks observed

 NY State Public Land (forest preserve and other)

 Evergreen-northern hardwood association
(NYS GAP Analysis Program)

 Map prepared by The Catskill Center for Conservation & Development

